

Black Cutworm

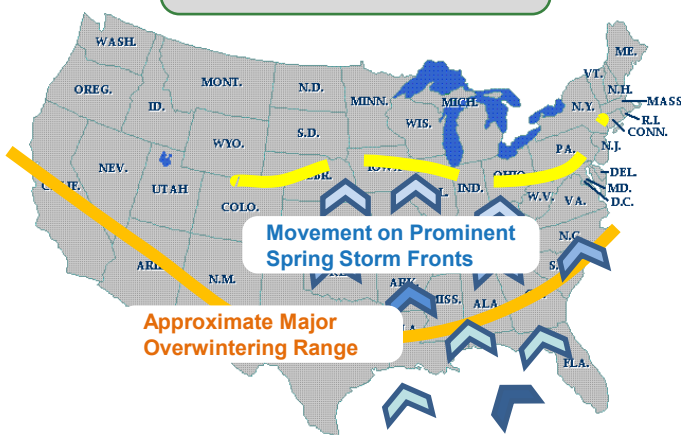
Pest Facts and Impact on Crop

- Latin name: *Agrotis ipsilon*
- The black cutworm is the major cutworm of the Corn Belt – similar species are found worldwide
- Black cutworms eat many plants, including corn, cotton, tobacco, vegetables, weeds and turf grasses



Recovery after being cut above the growing point

Black Cutworm Prevalence



Pest ID

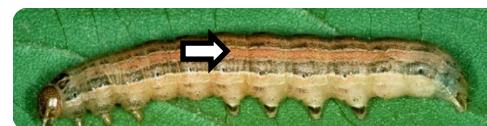
- Key characteristics
 - Adult forewings with dagger-shaped marking and kidney-shaped spot
 - Larvae are black/gray and grow to 1 5/8 inches
- Related/confused species:

Pest Symptoms

- Small larvae chew holes in leaves
- Fourth stage or older larvae exceed the width of a dime in length, and can begin cutting V1 to V5 stage plants
- Drilling into V6-V8 stage plants can kill growing point
- Cutting mostly above ground in wet soil, mostly below ground in dry soil



Sandhill cutworm



Armyworm



Glassy cutworm



Dingy cutworm



Bronzed cutworm



Variegated cutworm



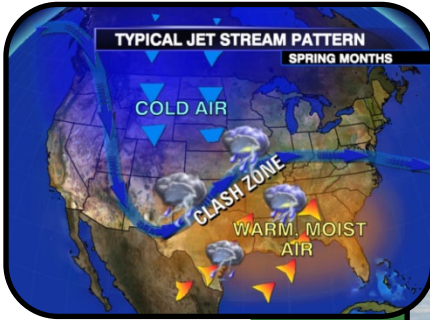
Black cutworm



Adults move north with spring storms and lay eggs in green fields

Black Cutworm Annual Cycle in Corn

Emerged adults move to other crops to lay eggs



MARCH - MAY

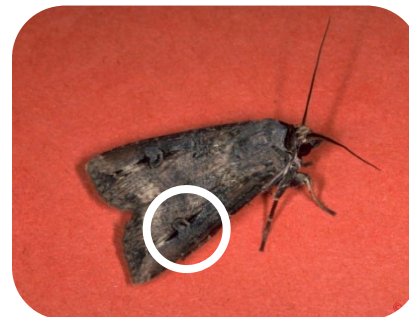
Eggs hatch in May, and larvae feed on corn leaves and roots

JUNE

SUMMER

Management

- Favorable conditions for pest occurrence would be spring storms prior to tillage and planting delivering moths to the area
 - Monitor moth flight reports
 - Kill existing vegetation nine or more days prior to planting to reduce larval survival
 - Natural enemies are generally birds and other predators, though they're not usually effective
- IPM practices
 - Pheromone trapping is used to determine when the pest is present
 - Intensively scout fields that are at risk
 - Reduced tillage or other practices that leave a food source for the young larvae increase risk
 - Insecticide seed treatments at high rates may give some control, but lower rates are not as effective
 - Broadcast pesticide or bait application may be used as a rescue treatment

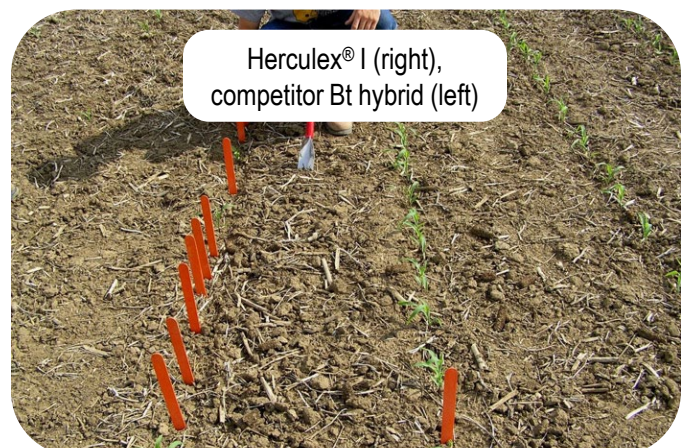


Black cutworm moth (and wing close-up)



Management with Pioneer Products

- Transgenic control
 - Herculex® I and Herculex® XTRA hybrids provide very good control of black cutworm -- control of other species may vary



Herculex® I and Herculex® XTRA Insect Protection technology by Dow AgroSciences and Pioneer Hi-Bred.® Herculex and the HX logo are registered trademarks of Dow AgroSciences LLC.