



The miracles of science™

# Technical Bulletin: Research Trial Update

## Demonstration Field Trials

DuPont™  
Approach™ Prima  
fungicide

### New Technology for Disease Control in Corn

#### Approach™ Prima has demonstrated healthier plants with:

- A combination of two premier fungicides for enhanced disease control
- Improved post-infection activity (curative)
- Control of strobilurin-resistant isolates, such as frogeye leaf spot

#### Trial Information

- Camilla, Georgia (SOH-12-657)
- Corn hybrid: Pioneer 31D58 — planted August 2, 2012
- Applications: V5 by ground; R1 by chemigation
- Rating: October 22, 2012, for common rust and Northern corn leaf blight

Control of Common Rust and Northern Corn Leaf Blight		
Treatment	Common rust (0–5 Severity index*)	Northern corn leaf blight (0–5 Severity index*)
Approach™ 12 fl oz/A + COC fb Approach™ Prima 6.8 fl oz/A + DuPont™ Prevathon® insect control 20 fl oz/A	0.5	1.5
Untreated	5.0	4.17

\* Severity index: 0 = no disease; 5 = 100% of leaves infected

#### Trial Information

- University of Florida, Belle Glade, R. Raid
- Corn hybrid: SS Jubilee Plus planted February 10, 2012
- Applications: 1st application March 27, 2012; 2nd application April 3, 2012
- Ratings: April 12, 2012; April 19, 2012; and the rating used in the data summary was April 24, 2012

Control of Northern Corn Leaf Blight	
Treatment	Northern corn leaf blight severity (%)
Approach™ Prima at 3.5 fl oz/A + NIS at 0.25% v/v	7
Headline 2.09 EC at 6 fl oz/A	11
Untreated	54

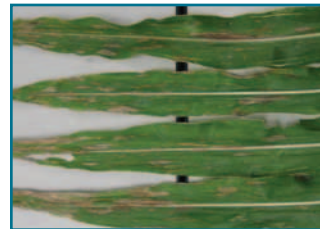
LSD (0.5) = 3.67  
Days after first application = 30  
Days after second application = 23

# DuPont™ Aproach™ Prima fungicide

The high rate of Aproach™ Prima gave excellent control of Northern corn leaf spot on September 8, 2011. Several treatments demonstrated excellent control of gray leaf spot.

### Trial Information

- South Charleston, Ohio (USA-11-668, MWH-11-668)
- Inbred: MBS3651 — Northern corn leaf blight, Northern corn leaf spot
- Inbred: MBS2575 — Northern corn leaf blight, gray leaf spot
- Applications: July 6 (v5/6); July 20 (v7/8); 20 gpa, 45 psi, 8002 VSXR
- Evaluated:
  - August 19 on 2nd leaf below the ear leaf
  - September 8 on the ear leaf; leaves below the ear leaf showed severity ratings, varying from 30–90% from the three diseases.



Untreated check. Inbred MBS3651 — September 8, 2011. Average 10.2% NCLB severity; average 7.3% NCLS severity.



Aproach™ Prima at 7.5 fl oz/A. Inbred MBS3651 — September 8, 2011. Average 2.8% NCLB severity; Average 0.9% NCLS severity.

### USA-11-668: Reduction in % severity of Northern corn leaf blight, Northern corn leaf spot or gray leaf spot on two inbreds sprayed at V5/6 and V7/8, South Charleston, Ohio, 2011\*

MWH-11-668	% Severity on MBS3651		% Severity on MBS2575	
	Northern corn leaf blight	Northern corn leaf spot	Gray leaf spot	
	Two below ear leaf Sept 8	Ear leaf Sept 8	Two below ear leaf Aug 19	Ear leaf Sept 8
Treatment (product per acre)				
Aproach™ Prima at 7.5 fl oz/A at V5/6 fb 14D	2.8	0.9	0.3	0.4
Aproach™ Prima at 5 fl oz/A at V5/fb 14D	2.6	1.9	0.3	0.7
Quadris at 9.2 fl oz/A at V5/6 fb 14D	--	3.7	0.2	0.8
Quilt Xcel at 9.2 fl oz/A at V5/6 fb 14D	4.3	3.2	0.2	0.8
Untreated check	10.2	7.3	4.3	4.2

\* Applications made on July 6 (V5/6) and July (V7/8). 20 gpa, 45 psi, 8002 nozzles. Evaluations made on August 19 on the leaf, two below the ear leaf, and on September 8 on the ear leaf.

### Trial Information

- USA-12-668, MWH-12-668
- Northern corn leaf spot, Race 3, control with Aproach™, PZX7 (Aproach™ Prima) in inbred production
- Inbred: MBS3651
- Application timing: V5/V7 followed by 14 days applied June 23 and July 12, 2012 (delayed due to very hot weather)
- Evaluations: Northern corn leaf spot showed up early on the lower leaves.
  - Evaluations made on July 13 on leaf collars 3/4 and 5/6 — not shown
  - Evaluations made July 31 on 2nd leaf below the ear leaf — not shown
  - Evaluation made August 20, on the ear leaf

### Reduction in Northern corn leaf spot, Race 3, after 2 fungicide applications to inbred corn MBS 3651

	Treatment rate (product per acre)	% Severity on ear leaf August 20
5	Aproach™ Prima 6.8 fl oz/A at V5/7 fb 14D	6.0
806	Quilt Xcel 14 fl oz at V5/7 fb 14D	6.5
999	Untreated check	14.4

\* Applications made June 23 (V5/V7 predominant V6) and July 12 (V8/V9); the delay was due to unusually hot weather July 3-8, which was not conducive to spraying. Applications made at 20 gpa, 46 psi.



Untreated leaves, August 20, 2012, northern corn leaf spot, race 3, inbred MBS3651.



Aproach™ Prima at 6.8 fl oz applied twice, August 20, 2012, MBS inbred.

DuPont™ Aproach™ Prima is not registered in all states. Contact your local DuPont representative for details and availability in your state. This reference guide is not intended as a substitute for the product label for the product(s) referenced herein. Product labels for the above product(s) contain important precautions, directions for use, and product warranty and liability limitations, which must be read before using the product(s). Applicators must be in possession of the product label(s) at the time of application. Always read and follow all label directions and precautions for use when using any pesticide alone or in tank-mix combinations. The DuPont Oval Logo, DuPont™, The miracles of science™, Aproach™ and Prevathon® are trademarks or registered trademarks of DuPont or its affiliates. Headline is a registered trademark of BASF. Quadris and Quilt Xcel are registered trademarks of a Syngenta Group Company. Copyright © 2013 E.I. du Pont de Nemours and Company. All Rights Reserved. 8/13 Reorder No.: K-26740-1 (Replaces K-26740)