

Headline®

Fungicide

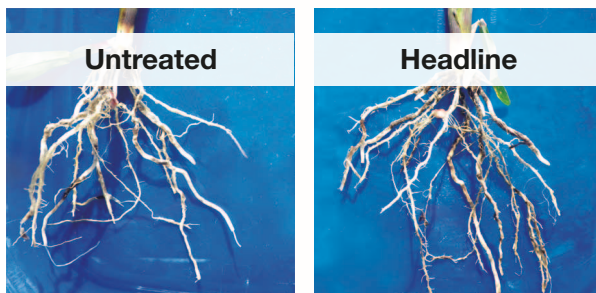
In-furrow Application in Corn: Laying the Foundation for Success

Benefits of Headline® Applied In-furrow

- Aids in controlling soilborne *Rhizoctonia solani*
- Enhances root growth and seedling vigor
- Improves cold tolerance

Rate per 1000 row feet (fl oz)	Headline Rate (fl oz/A)				
	15" rows	20" rows	22" rows	30" rows	36" rows
0.1	3.5	—	—	—	—
0.2	7.0	5.2	4.7	3.5	3.0
0.3	10.5	7.8	7.1	5.2	4.5
0.4	—	10.4	9.5	6.9	6.0

In 30" rows, do not exceed 0.6 fl oz/1000 row feet.



Fullerton, NE, on-farm trial 2012. Planted 4/23/12; Photo taken: 5/23/12.

Best Use Recommendations

- Use Rate: 0.1 to 0.4 fl oz/1000 ft row; see label for rate/A based on row spacing
- Maximum Rate/Season: 12 fl oz/A
- Minimum Volume of Water: 2.5 gal/A

Target Diseases

- *Rhizoctonia solani*

General Information

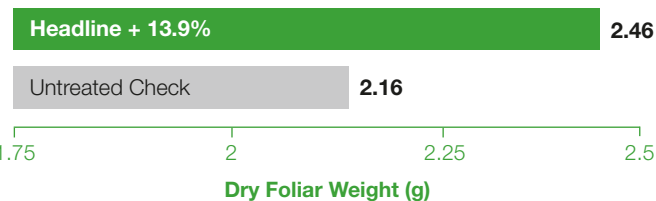
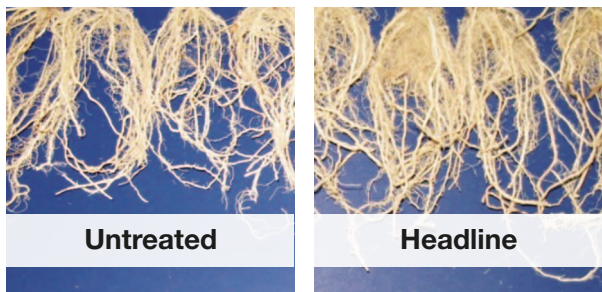
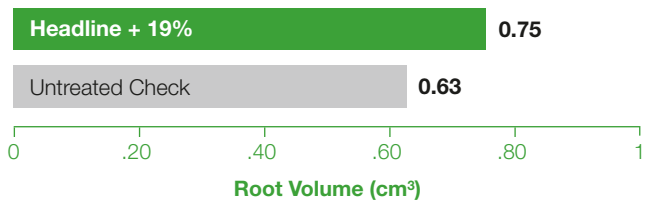
- Use Headline EC formulation when mixing with liquid fertilizer



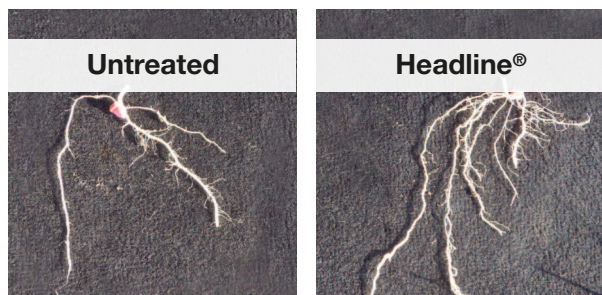
Technical Information Bulletin

 **BASF**
The Chemical Company

Headline In-furrow Applications—Effect on Root Volume and Dry Foliar Weight

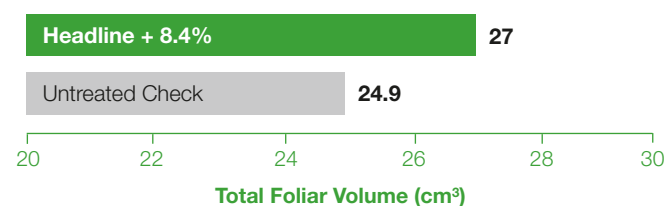
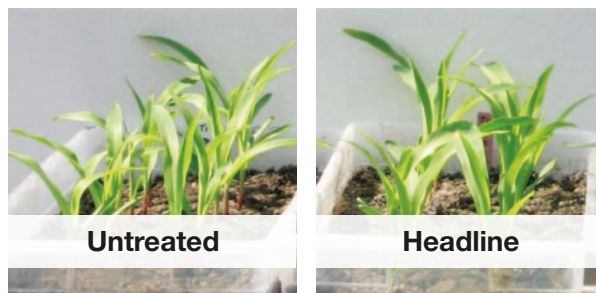
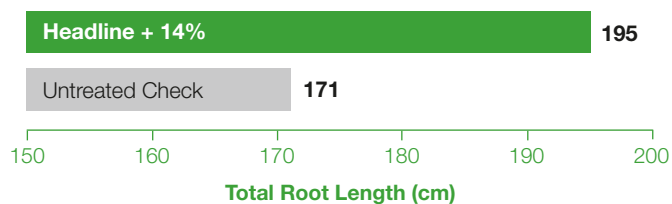


BASF replicated field trial, Holly Springs, NC 2012. Headline EC was applied in-furrow and measurements were taken from V5 harvested and dried plants. Measurements made with WinRhizo scanner.



Fullerton, NE, on-farm trial 2012. Planted 4/23/12: Photo taken: 5/23/12.

Headline In-furrow Applications Under Cold Stress Conditions (50° F)



BASF replicated greenhouse trial, Durham, NC 2012. Headline EC was applied in-furrow, plants were grown under 50° F for 7 days, then 77° F for 7 days, then measurements were made with WinRhizo scanner.

