

Soybean Scouting Calendar *



Pest (Insects & Diseases)	0-1 Month After Planting	1-2 Months After Planting	2 Months to Max Height	Bloom to Pod Fill	Pod Fill to Leaf Drop
Insects					
Bean Leaf Beetle	█	█	█	█	█
Two - Spotted Spider Mite		█	█	█	█
Soybean Aphid			█	█	█
Japanese Beetle			█	█	█
Green Stink Bug			█	█	█
Diseases					
Bean Pod Mottle (BPMV)	█	█	█	█	
Soybean Cyst Nematode		█	█	█	█
White Mold				█	█
Phytophthora Root Rot	█	█	█	█	█
Pythium Root Rot	█	█			
Rhizoctonia Root Rot		█	█	█	
Brown Stem Rot				█	█
Sudden Death Syndrome				█	█
Charcoal Rot					█

*Scouting information based on information from DuPont Pioneer, Iowa State University Extension, Purdue University Extension, University of Illinois Extension and the University of Kentucky Extension.



Bean Leaf Beetle



Two-Spotted Spider Mite



Soybean Aphid



Japanese Beetle



Green Stink Bug



Bean Pod Mottle



Soybean Cyst Nematode



White Mold



Phytophthora Root Rot



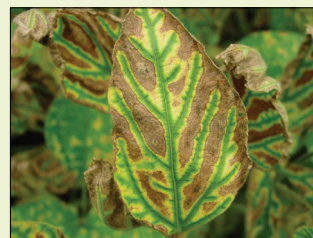
Pythium Root Rot



Rhizoctonia Root Rot



Brown Stem Rot



Sudden Death Syndrome



Charcoal Rot

The DuPont Oval Logo is a registered trademark of DuPont. ©, TM, SM Trademarks and service marks of Pioneer. © 2013, PHIL