



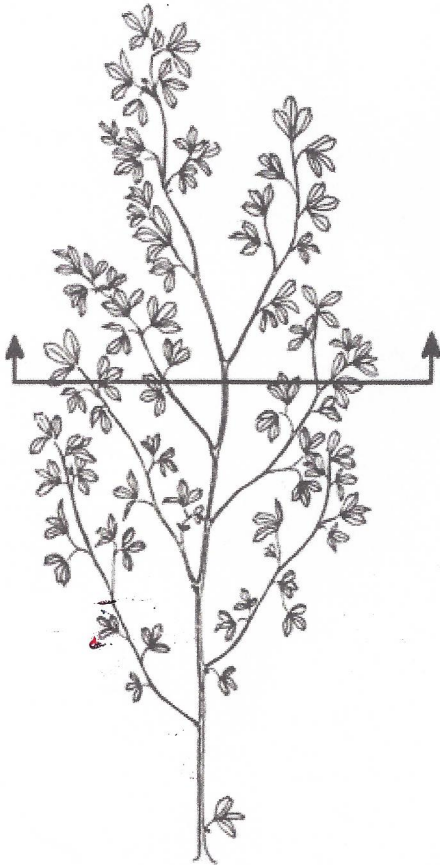
**AgSource
Laboratories**

A Subsidiary of Cooperative Resources International

PLANT ANALYSIS

PICTORIAL SAMPLING GUIDE

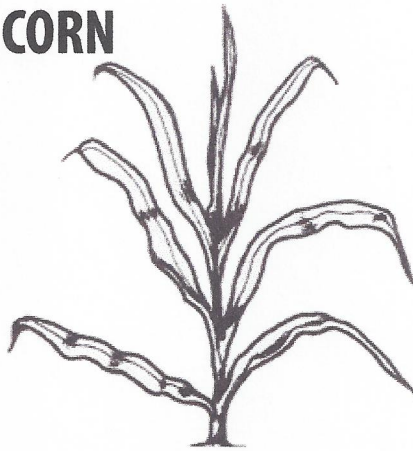
ALFALFA, OTHER LEGUMES



6 inches to flowering

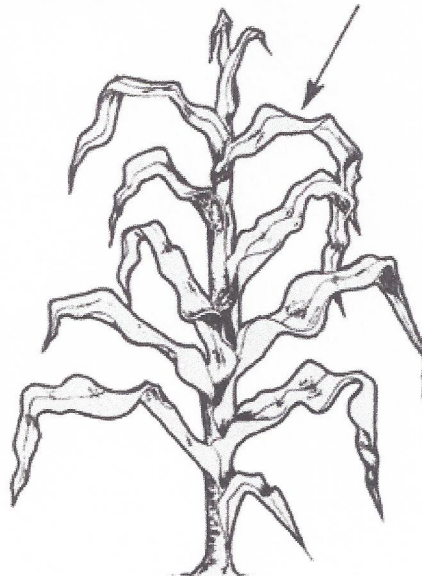
Submit top 6 inches or top half of plant if less than 8 inches tall. Sample 25-30 plants.

CORN



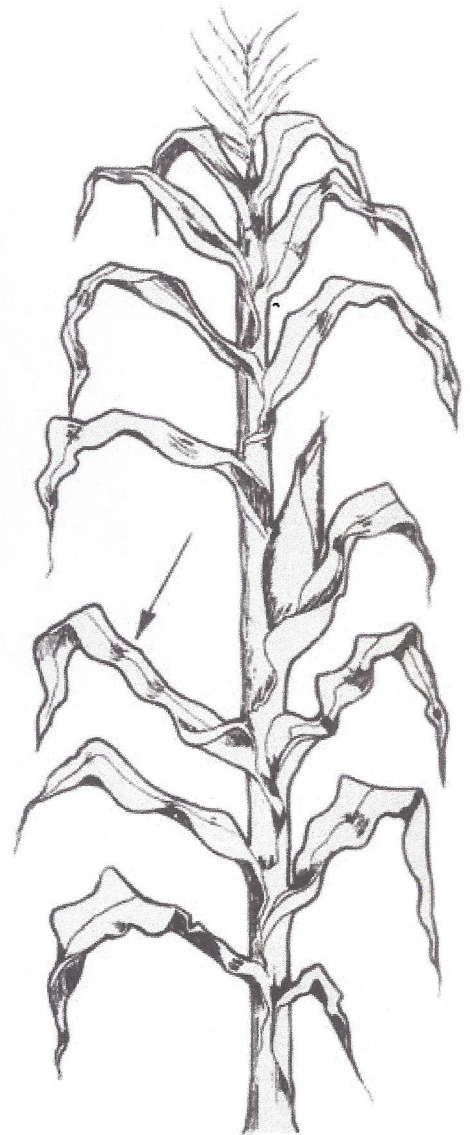
4 to 20 inches tall

Cut stalk off about 1/2" above ground level. Submit 20-25 whole plants.



Over 20 inches but prior to tasseling

Submit first fully developed leaf from top (first leaf below whorl). Cut leaf at its base where it joins sheath. Sample at least 20-25 plants.



Tasseling to pollination

Submit leaf below and opposite ear. Cut leaf at its base where it joins sheath. Sample at least 20-25 plants.

COTTON



Following first bloom

Submit the petiole or leaf blade of the youngest fully mature leaf on the plant. Sample 25-30 plants.

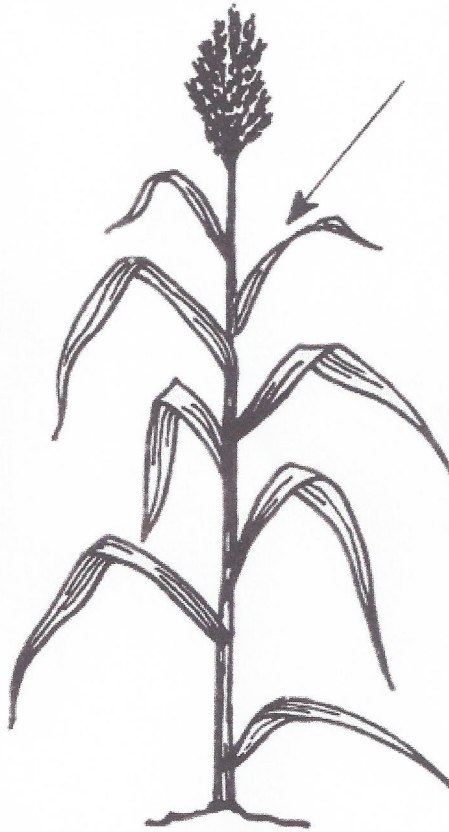
SMALL GRAINS, FORAGE GRASSES



4 inches to heading

Submit first fully developed leaf from top. Remove blade where it joins main stem. Sample 60-80 plants.

SORGHUM



Prior to or at heading

Submit the second leaf from top of plant. Sample 20-30 plants.

SOYBEANS, FIELD BEANS



4 inches to pod set

Submit first fully developed trifoliate leaf from top. Sample 20-25 plants.

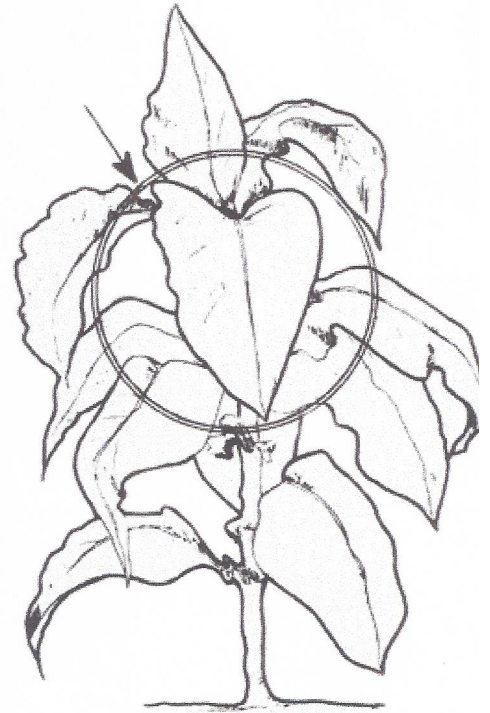
SUGAR BEETS



Anytime during growing season

Submit petioles or leaf blades of a fully extended, mature leaf. Sample 40 petioles.

TOBACCO



Before bloom

Submit first fully developed leaf from the top. Sample 20-25 plants.